

VISION



We Are GIST



GIST's People-Centric Research and Development (R&D)

- To improve people's quality of life by conducting research on issues affecting humanity
- To promote economic growth by expanding technology start-up opportunities



GIST's Role and Responsibilities (R&R) as a Model University in Korea

- To disseminate the benefits of science and technology to improve the welfare of society
- To be a campus where everyone can thrive through open-communication and self-determination



GIST's Global Leadership for Science and Technology Development

- To educate scientists with a strong liberal arts foundation and advanced technical expertise
- To produce Global Leaders who will improve the world during the 4th Industrial Revolution

Other Major Features

Technical Commercialization

- Technology transfer assisted companies: 204
- Technology transfer revenue: 38.8 billion won

No.33 Thomson Reuters

- No.11 in Korea and No.33 in Asia for The World's Most Innovative University by Thomson Reuters 2019

Average of 5.75 SCI Papers

- Average of 5.75 SCI papers published per Ph.D. candidates

No.46 for THE Young University Rankings

- No. 4 in Korea and No. 46 in the world by THE* Young University Rankings

* THE: Times Higher Education

GIST Gwangju Institute of Science and Technology

123 Cheomdangwagi-ro, Buk-gu, Gwangju, 61005, Korea
 Tel +82-62-715-2027 Fax +82-62-715-2029
 Issued Date July 2019
 Publisher GIST Section of Public Affairs

COPYRIGHT © 2019 Gwangju Institute of Science and Technology · All Right Reserved

GIST Gwangju Institute of Science and Technology

Gwangju Institute of Science and Technology

OVERVIEW

The Gwangju Institute of Science and Technology (GIST) is a government-sponsored research institute with graduate and undergraduate degree programs.

Founded in 1993, GIST has pioneered innovative research and educational initiatives, such as creating Korea's first liberal arts-based collegiate science curriculum with extensive educational exchange programs with distinguished universities around the world.

GIST has grown over the past two and a half decades to include an ever diverse group of talented students and prominent professors from around the world who work tirelessly together to achieve greater scientific and technological successes with the goal of becoming a top-tier global university by 2035.

GIST by the numbers

Est. **1993**

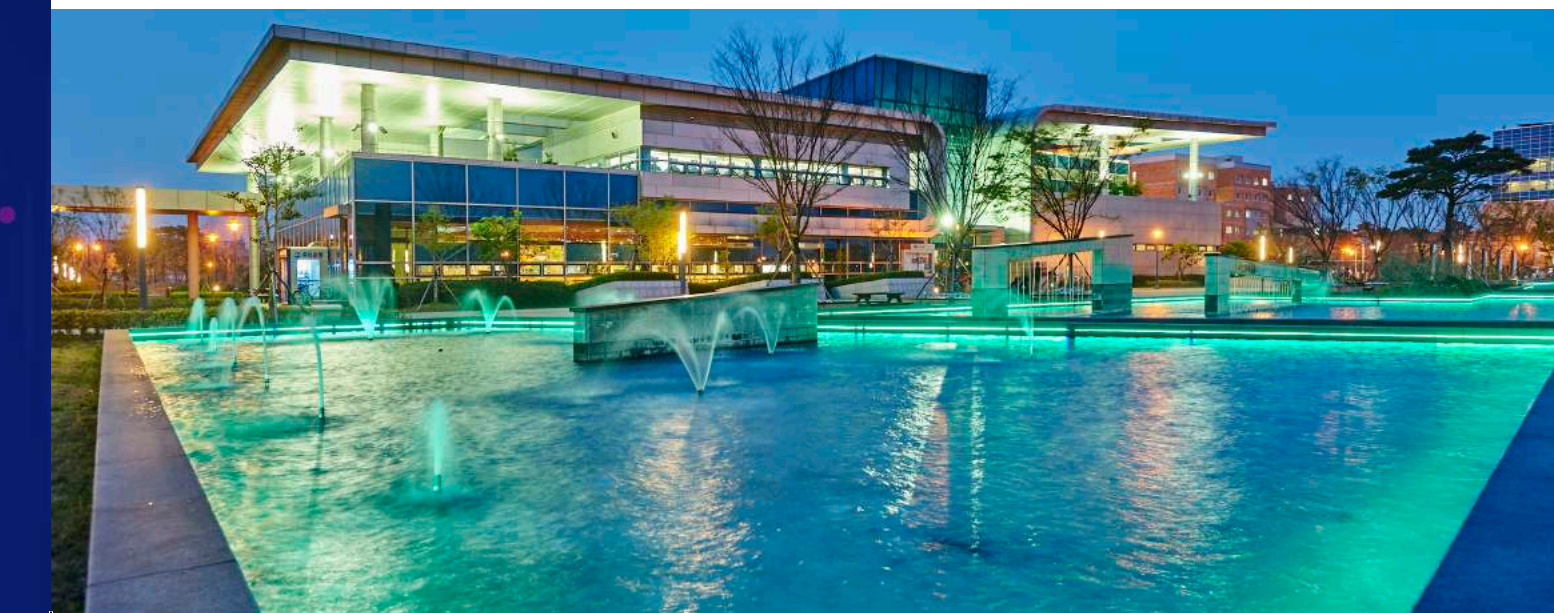
Faculty **190** Researcher **29**

Undergraduates **942**
 Graduate students **1,300**

Alumni **5,903**

1.02 Patent Registration per Faculty (2018)

Student Faculty Ratio **11.8:1**

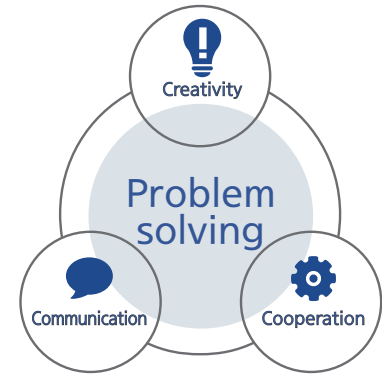




"3C&1P"

Broad Education for Undergraduates

Division of Liberal Arts and Sciences



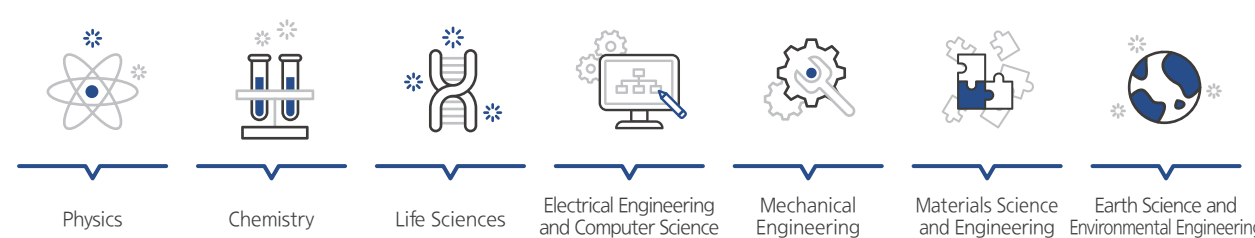
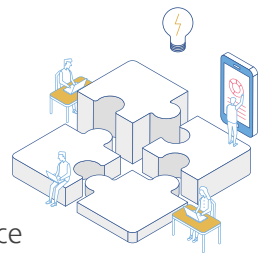
[In-depth Education for Undergraduates]

Freshmen

Acquiring a solid foundation for scientific study with a broad liberal arts education

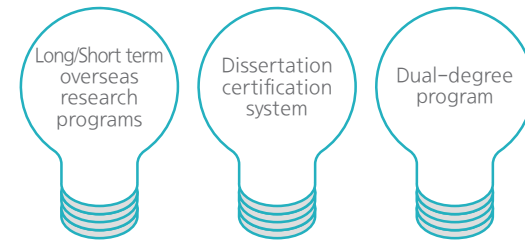
Sophomores, Juniors, and Seniors

Declaring a major for a concentrated course of study enhanced with research experience



[Features and Benefits]

- Small class sizes
- Low student-to-faculty ratio
- Exemption from tuition fees
- On-campus dormitory housing
- Research partnerships with graduate laboratories
- Study Abroad Programs with Caltech and UC Berkeley
- 1:1 Mentoring system
- Inquiry-based learning



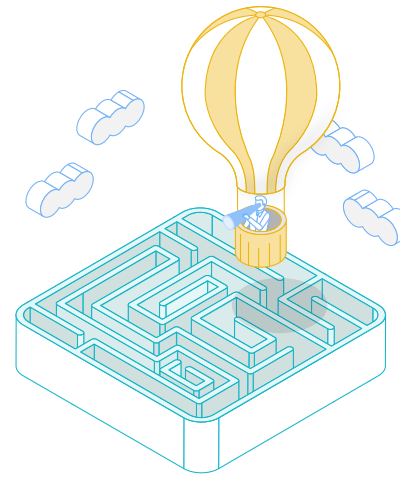
Pioneers of Advanced Science and Technology

[Advanced Degree Programs]

- M.S., Ph.D., and M.S.-Ph.D. Integrated Programs

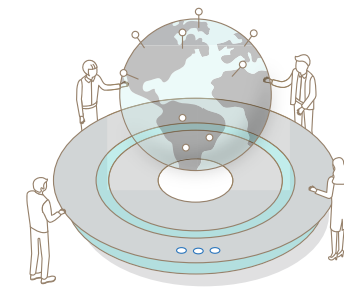
[Schools and Departments]

- School of Electrical Engineering and Computer Science
- School of Materials Science and Engineering
- School of Mechanical Engineering
- School of Earth Sciences and Environmental Engineering
- School of Life Sciences
- School of Physics and Chemistry
 - Department of Physics and Photon Science
 - Department of Chemistry
- Institute of Integrated Technology
 - Department of Biomedical Science and Engineering
 - School of Integrated Technology



[Features and Benefits]

- All science classes are taught in English
- Low student-to-faculty ratio
- Exemption from tuition fees
- Monthly stipends and research assistantships
- Health insurance (60% coverage) and a one-time flight reimbursement (one way) for international students

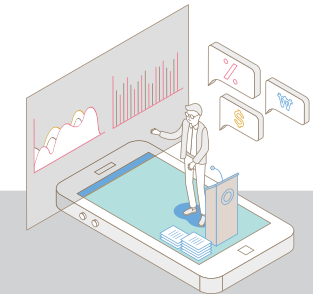


World-class research is the focus of GIST. With our outstanding faculty, state-of-the-art facilities, and abundant opportunities for collaboration, GIST provides one of the best research environments available anywhere in the world today.

In the 2019 QS World University Rankings, GIST was ranked No.5 for citations per faculty, which is widely considered an objective measure of research quality and productivity. After being ranked 15th in 2008, GIST has continually maintained high rankings. GIST was recognized for its world class research ability after being ranked in the top 10: 6th in 2013, 4th in 2014, and 2nd in 2015, 2016 and 3rd in 2017, 2018.

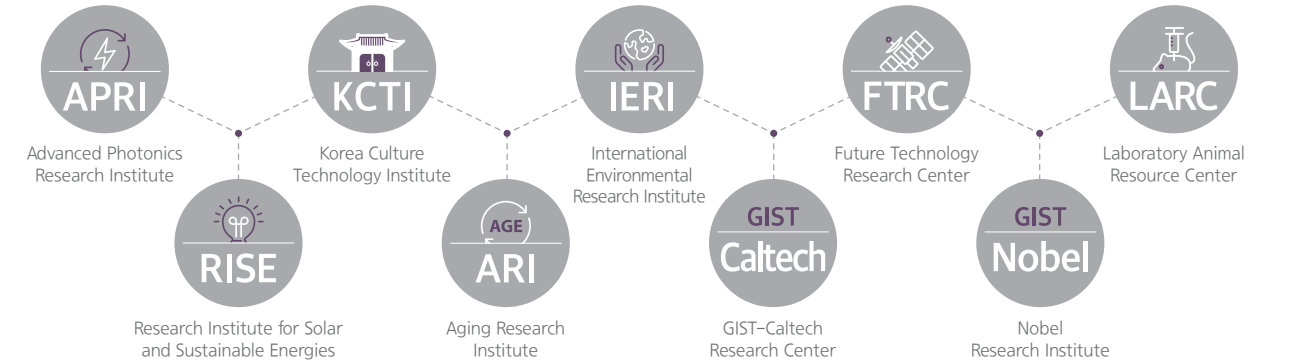


01		King Abdullah University of Science and Technology
02		Indian Institute of Science
03		Princeton University
04		California Institute of Technology (Caltech)
05		Gwangju Institute of Science and Technology (GIST)



[GIST Research Institute (GRI)]

GIST has evolved its research system to actively respond to changing trends and to create a research and development environment suitable for the 4th Industrial Revolution. Diverse research institutes and applied science and technology research groups are all under the auspices of GRI so that research planning bodies, R&D facilities, and technology commercialization and start-up organizations can cooperate organically with each other.



[GIST Technology Institute]

GIST Technology Institute (GTI) was established in 2005 as a hub to link the advanced research capabilities of GIST with various industries and to support the commercialization of new and innovative technologies. To achieve this goal, GTI has become a leader in analyzing the technological needs of industrial clients and in developing commercialization strategies for promising new technologies in domestic and foreign markets.

NO.1
in Korea

